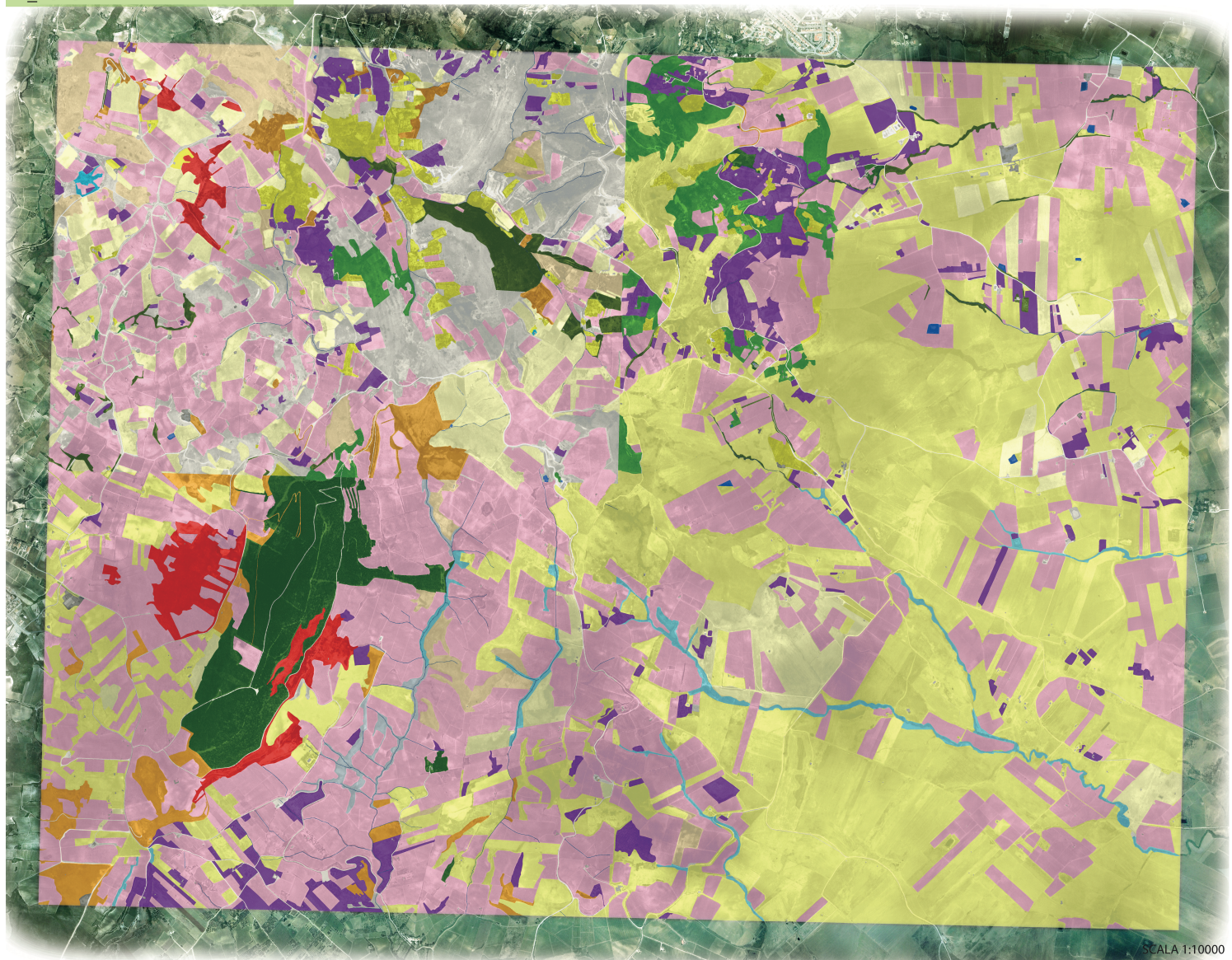




#1_FOTOINTERPRETAZIONE

Territorio: Vita Est- Calatafimi Sud_Tp ATA 606110



SCALA 1:10000

Legenda Eunis Code

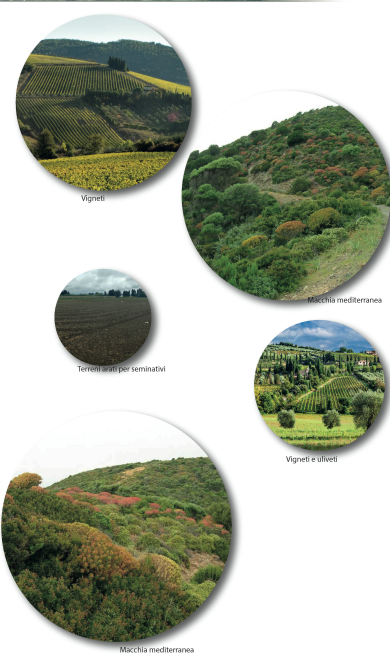
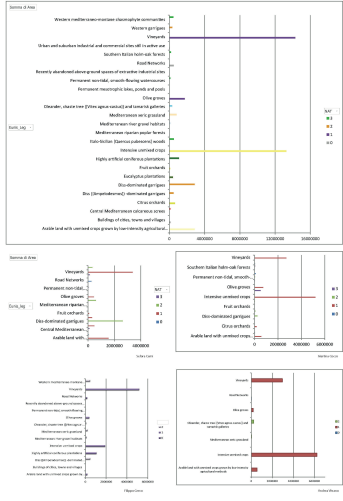
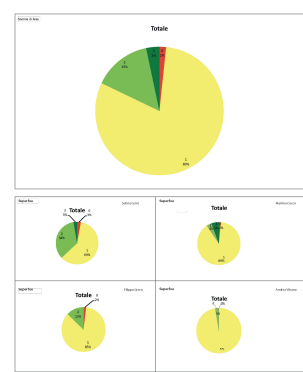
- Road Networks
- Arable land with unimproved crops grown by low intensity agricultural methods
- Buildings of cities, towns and villages
- Central-Mediterranean calcareous steppes
- Southern Italian holm-oak forests
- Cistus orchards
- Dica-dominated garigues
- Eucalyptus plantations
- Fruit orchards
- Highly artificial coniferous plantations
- Intensive unimproved crops
- Isto-Sicilian Quercus subcoccinea woods
- Mediterranean riparian poplar forests
- Mediterranean river gravel habitats
- Mediterranean submontane grass communities
- Mediterranean xeric grasslands
- Southern Italian holm-oak forests
- Chenopier, chaste tree and tamarisk galleries
- Olive groves
- Permanent mesotrophic lakes, ponds and pools
- Permanent non-tidal, smooth-flowing watercourses
- Recently abandoned above-ground spaces of extractive industrial sites
- Southern Italian holm-oak forests
- Urban and suburban industrial and commercial sites still in active use
- Vineyards
- Western garigues
- Western mediterraneo-montane chamaephyte communities

#2_ANALISI DEI LIVELLI DI NATURALITA'



Classi di Naturalità	Superficie in Ha	%
1	100000	10.00
2	200000	20.00
3	300000	30.00
4	400000	40.00
5	500000	50.00
Totale complessivo	1000000	100.00

SOMMA CUMULATIVA	R	HC	REI
1	100000	0.100000	0.100000
2	200000	0.200000	0.200000
3	300000	0.300000	0.300000
4	400000	0.400000	0.400000
5	500000	0.500000	0.500000



#3_METODOLOGIA GIS

